



GETTING THE
BEST SOLUTIONS
IN
THE MARKET FOR
OUR CUSTOMERS

Why Us?

- 40 Year Legacy of delivering best-in-class Customer-centric Solutions.
- Catering to various industries- Life Sciences, Education to Geophysical and Pharmaceutical

Lab Chemicals Product Catalogue

Prepared by:



Date:

5/7/18

Procurement Team



5/7/2018

Approved by:

Head of Procurement

Date:



5/7/18

Authorised by:

Managing Director

Date:



2nd Floor
Berkeley Square House
Berkeley Square
Mayfair, London, W1J 6BD
+44(0) 2079936060

Lab Chemicals International Limited

Company Registration No. 276923563

Registered Office: Berkeley Square House, Berkeley Square - Mayfair, London, W1J 6BD.

CONTENTS

1 INTRODUCTION	5
2 HOW TO GET THERE	6
3 LABORATORY GLASSWARES	7
4 LABORATORY GLASS	8
4.1 Lab Glasswares.....	8
4.2 Organic Chemistry Sets	11
4.3 Tubing, rods and capillaries	12
4.4 Wide range of applications :	15
5 INDUSTRIAL CHEMICALS.....	16
6 FINE CHEMICALS.....	17
7 TEST PAPERS.....	21
7.1 pH indicator papers.....	21
7.2 pH Indicator Strips - non-bleeding	22
7.3 J-QUANT® test strips.....	22
7.4 Qualitative Filter Papers	23
7.4.1 Standard Qualitative Filter Papers	24
7.4.2 Wet-strengthened Qualitative Filter Papers.....	24
7.4.3 Ashless Filter Papers	25
7.4.4 Hardened Ashless Filter Papers	25
7.5 Blotting, Chromatography and Electrophoresis Papers, Blotting Membranes.....	25
7.6 Microfibre Filters	26
7.6.1 Glass Fibre Filters	26
7.6.2 Quartz Microfibre Filters - binder free.....	26
7.7 Extraction Thimbles	27
7.7.1 Cellulose Extraction Thimbles	27
7.7.2 Glass Fibre Extraction Thimbles	28
7.8 Micro Filtration	28
7.8.1 Sterile Membrane Filters	28
7.8.2 Non-Sterile Membrane Filters	28
7.9 Syringe Filters.....	28
7.10 Cross Reference Chart	29
8 LABORATORY VISCOMETER.....	30
9 ENVIRONMENTAL - GEOPHYSICAL EQUIPMENT.....	31
10 WATER TESTING SOLUTIONS.....	33
10.1 The new Quanti-Tray* Sealer PLUS	33
10.2 Technology.....	34

11 WATER TESTING SOLUTIONS	35
11.1 Metal analysis equipment - Metalyser Field Pro HM3000.....	35
12 MAGNETIC STIRRERS	37
12.1 Single and multipoint magnetic stirrers.....	37
12.2 Three different housing materials	37
13 CO2 CELL CULTURE INCUBATORS	38
13.1 170L, 48L & 14L 2018.....	39
14 PRODUCT FOR ANIMAL HEALTH/ NUTRITION	40
15 PRODUCT FOR FOOD/ PHARMA	41
16 CONCLUSIONS	43

TABLES

Table 4-1: Tubing, rods and capillaries	15
Table 5-1: Industrial Chemicals	17
Table 6-1: Standard Qualitative Filter Papers.....	24
Table 6-2: Wet-strengthenedQualitative Filter Papers	24
Table 6-3: Ashless Filter Papers.....	25
Table 6-4: Hardened Ashless Filter Papers	25
Table 6-5: Glass Fibre Filters.....	26
Table 6-6: Cross Reference Chart	30
Table 12-1: CO2 Cell Culture Incubators	39

FIGURES

Figure 1-1 Lab Chemicals office, London	6
Figure 3-1 Water Still range fitted with metal or silica heater	7
Figure 3-2 Complete Distillation unit.....	8
Figure 4-1 Laboratory Glasswares – wide range	9
Figure 4-2 Joint Sets	10
Figure 4-3 Different range of glasswares.....	11
Figure 4-4 Gloves (Nitrile - powder free).....	11
Figure 4-5 Different organic chemistry sets	12
Figure 4-6 Tubing, rods and capillaries.....	13
Figure 6-1 pH indicator strips and test papers	22
Figure 6-2 J-QUANT® test strips.....	23
Figure 6-3 Qualitative Filter Papers	24
Figure 6-4 Microfibre Filters.....	26
Figure 6-5 Extraction Thimbles.....	27
Figure 6-6 Micro Filtration.....	28
Figure 6-7 Syringe Filters	29
Figure 7-1 DV2T EXTRA Touch screen Viscometer	31
Figure 8-1 Logger.....	32
Figure 8-2 Borehole Resistivity System	32

Figure 8-3 Winches.....	33
Figure 9-1 Quanti-Tray* Sealer PLUS.....	34
Figure 9-2 Colilert-18 snap pack technology	35
Figure 10-1 Metalyser Field Pro HM3000.....	36
Figure 11-1 Single and multipoint magnetic stirrers	37
Figure 11-2 Magnetic stirrers used in different standards.....	38

1 INTRODUCTION

Lab Chemicals has been trading since 1975, as a leading distributor & supplier of chemicals, and lab equipment. We cater to diverse sectors from educational Institutions to Government Departments. We supply a complete range of **Laboratory equipment/instruments, industrial chemicals, glasswares, plastic wares, filter papers, medical equipments & other Laboratory consumables/reagents** to all schools, universities, veterinary hospitals, government research department, leather/ tannery industries and much more. Additionally we can also supply a wide range of **Fine Chemicals, Speciality Chemicals, Performance Chemicals and laboratory products** that may be of interest to you.

Our fundamental tenet is to partner closely with our customers and suppliers to deliver world class products, seamlessly. Increasingly we are working with our clients as their sourcing partner. Assisting them with the development of new and existing products – enabling them to bring their offerings to market, competitively priced, while maintaining the consistency and quality which their customers have come to expect.

We have spent years travelling to different parts of the world to forge relations with the market leaders and innovators, to get the best in market solutions and products to our Clients doorstep.

We are keen to be your total solution partner in sharing our experience and knowledge in selecting the suitable & best products for your application

We are long term suppliers to HM Government, NHS, Education authorities and all major selling industries.

We export to Egypt, USA, Malaysia, Singapore, Thailand, Indonesia, Vietnam, Sri Lanka, Pakistan, Bangladesh, Tunisia, Cyprus, Kenya, Denmark, Finland, Norway, Eire, Portugal, Spain, Luxembourg & Romania.

All Lab chemicals products are procured and supplied to British or international standards where applicable.

How to find us :- Our bright and newly refurbished head office space is in the heart of Mayfair and is easily accessible via both public transport and car and is just steps away from some of the area's best pubs and restaurants.



Figure 1-1 Lab Chemicals office, London

2 HOW TO GET THERE

Closest airports

- London Heathrow Airport
15.3 miles via M4 and A4
- London Gatwick Airport
55.3 miles via M25
- London Luton Airport
33.3 miles via M1

Nearest Tubestations

- Green Park Station
6 min walk (0.3 mi) via Berkeley St
- Bond Street Station
8 min walk (0.4 mi) via Davies St

3 LABORATORY GLASSWARES

Water stills

The range of water stills provide all the answers to pure water requirements. High quality glassware, advanced design together with minimum maintenance combine to provide a product that will give reliable service for years. All stills are protected by safety features giving failsafe operation without supervision.

Alternative low cost metal heaters or high purity silica sheathed elements are available.



Figure 3-1 Water Still range fitted with metal or silica heater

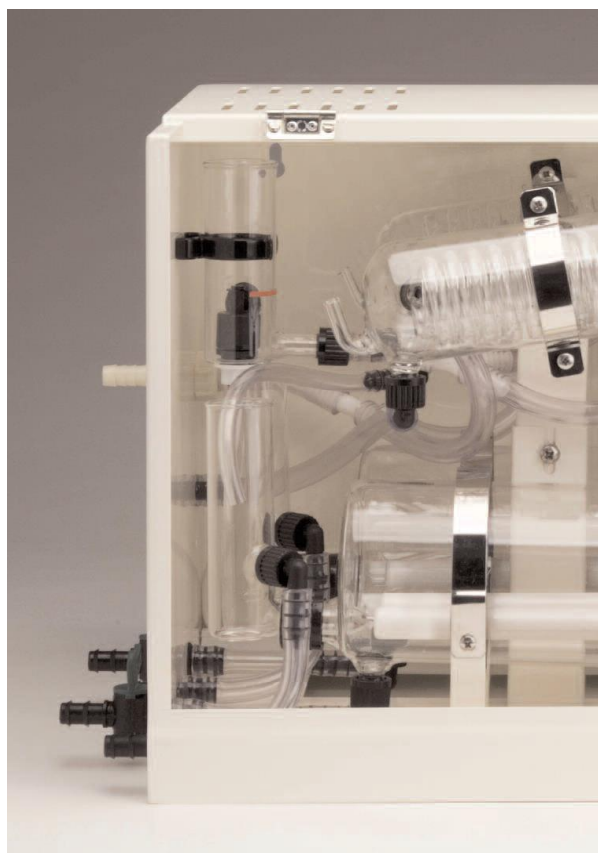


Figure 3-2 Complete Distillation unit

We can offer deionisers for pre distillation water treatment. The deionisers are cost effective stand alone systems that provide low to medium volumes of either primary or deionised grade water. Water quality is easy to monitor, with built in meters or colour change indicators on the small deionisers and a range of conductivity / resistivity meters

4 LABORATORY GLASS

Our glass products are provided to the highest standard for use in labs in industry and in education.

4.1 Lab Glasswares

We supply a wide range of jointed laboratory glassware, cones, sockets and screw threads with various shank diameters and lengths.



Figure 4-1 Laboratory Glasswares – wide range

Our products are available in bulk or in various lengths and widths or even packaged to your own needs. Please contact us for further information.

1. Absorption Tubes	2. Extraction Apparatus
3. Adapters	4. Flasks
5. Stillheads and Splasheads	6. Filtration Assembly
7. Bottles	8. Volumetric Flask
9. Condensers	10. Funnels
11. Joints/Stoppers	12. Gas Generator
13. Extractors	14. Jars
15. Filter Funnels	16. Kettles
17. Flasks	18. Pipettes
19. Gas Syringe Apparatus	20. Weighing Scoop
21. Organic Sets.	22. Tubes
23. Screw Threads	24. Adapters

The copyright in this document is the property of Lab Chemicals International Ltd and the contents may not be reproduced or revealed to third parties without prior permission of that company in writing.

Second Floor - Berkeley Square House, Berkeley Square - Mayfair, London, W1J 6BD.

25. Separating Funnels	26. Test Tubes /Culture Tubes
27. P.T.F.E. Stopcocks	28. Watch Glasses
29. Volumetric Ware	30. Sintered Ware
31. Beakers	32. Quartz ware
33. Bottles	34. Chromatography Vials
35. Burretes	36. Microscope slides & Cover Glass
37. Cones	38. Vetro Clean
39. Condensers	40. Lab Accessories
41. Cylinders	42. Liquid Handling Systems
43. Dessicators	44. Micro Centrifuge Tubes
45. Dishes	46. Premium Pipette Tips
47. Distilling Appararus Viscometer	48. Apparatus
49. Water Distillation Unit	50. LabQuest
51. Gloves (Nitrile - powder free)	

Our products are available in bulk or in various lengths and widths or even packaged to your own needs. Please contact us for further information.

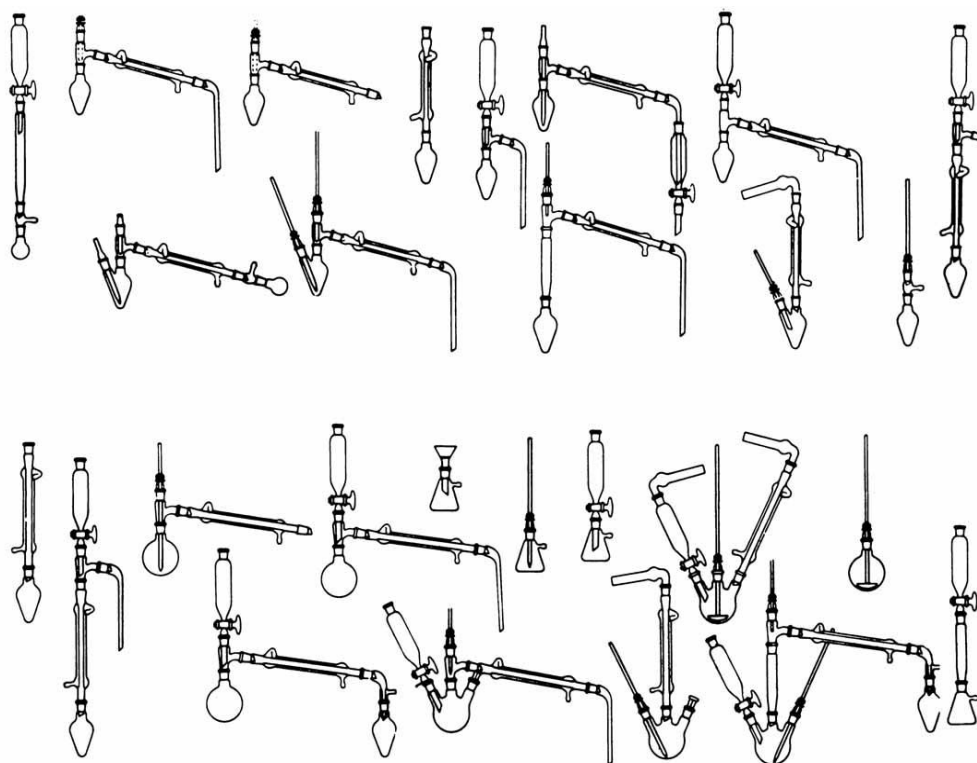


Figure 4-2 Joint Sets



Figure 4-3 Different range of glasswares

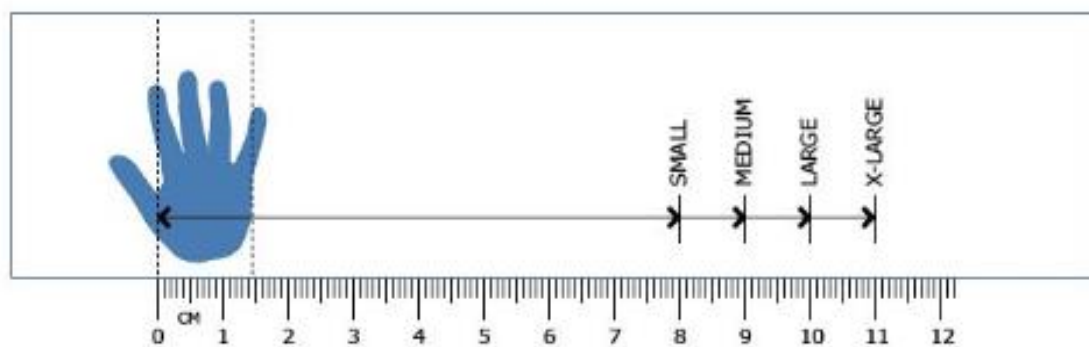


Figure 4-4 Gloves (Nitrile - powder free)

4.2 Organic Chemistry Sets

Lab Chemicals now offer a progressive range of semi-micro sets, designed to cover the widest range of techniques in organic chemistry. All items are made to the highest possible standards associated with Laboratory Glass; being completely interchangeable and easily replaced should a loss or breakage occur.

All items are packed in boxes with cut-out foam inserts making storage tidy and safe.



IGS Set



MJ2



14J4



HGS/1



MJ14/23

Figure 4-5 Different organic chemistry sets

4.3 Tubing, rods and capillaries

Lab chemical offer a wide range glass tubes, rods and profiles in large diameters and a variety of lengths. **We can provide customized products and services for international growth markets such as pharmaceutical and electronics as well as industrial and environment engineering.**

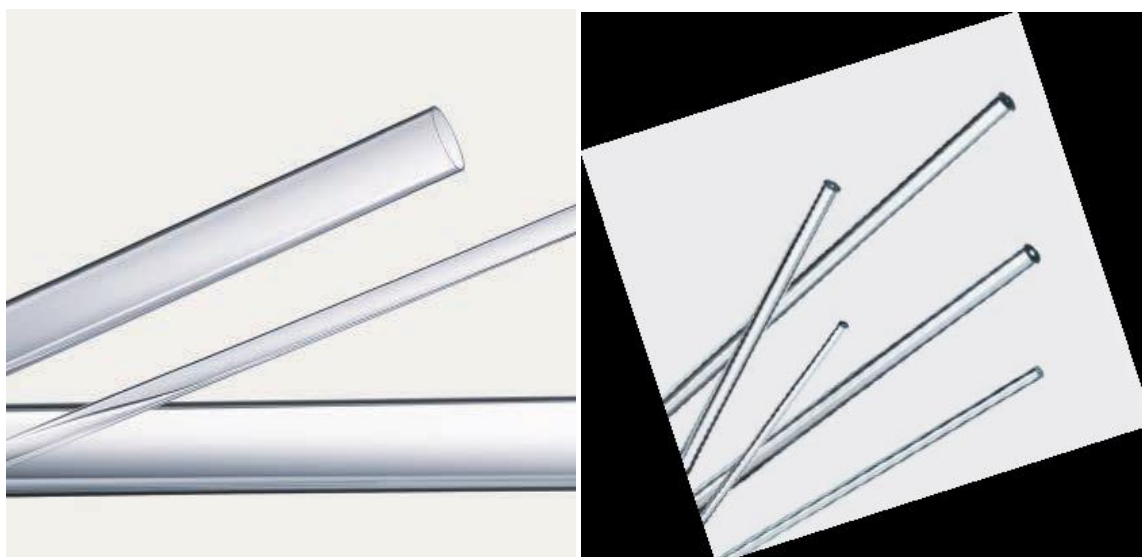


Figure 4-6 Tubing, rods and capillaries

Below are some examples of the tubing which we procure and supply to international markets. **For more information on tubes, please call +44 (0) 207 993 6060 or email. For quote please provide us the product name, specification/size and quantity.**

Qty	Product Code	Product Description	KG
Light Wall :-			
1.00	TUBING	10mm OD x 1mm Wall 1pack	9
1.00	TUBING	12mm OD x 1mm Wall 1pk	15
1.00	TUBING	13mm OD x 1mm Wall 1pk	15
1.00	TUBING	15mm OD x 1.2mm Wall 1pk	15
1.00	TUBING	16mm OD x 1.2mm Wall 1pk	15
1.00	TUBING	17mm OD x 1.2mm Wall 1pk	15
1.00	TUBING	18mm OD x1.2mm Wall 1pk	14
1.00	TUBING	20mm OD x 1.2mm Wall 1pk	13
1.00	TUBING	22mm OD x 1.2mm Wall 1pk	11
1.00	TUBING	28mm OD x 1.4mm Wall 1pk	9.8
1.00	TUBING	30mm OD x 1.4mm Wall 1pk	15.2
1.00	TUBING	32mm OD x 1.4mm Wall 1pk	11.3
1.00	TUBING	36mm OD x 1.4mm Wall 1pk	12.6
1.00	TUBING	38mm OD x 1.4mm Wall 1pk	10.8
1.00	TUBING	42mm OD x 1.6mm Wall 1pk	10.9
1.00	TUBING	44mm OD x 1.6mm Wall 1pk	11.4

1.00	TUBING	60mm OD x 2.2mm Wall 1pk	12
1.00	TUBING	75mm OD x 2.2mm Wall 1pk	13.5
1.00	TUBING	110mm OD x 3mm Wall 1pk	10.1
1.00	TUBING	120mm OD x 3mm Wall 1pk	14.7
Medium Wall :-			
1.00	TUBING	7mm OD x 1.5mm Wall 1pk	15
1.00	TUBING	8mm OD x 1.5mm Wall 1pk	15
1.00	TUBING	9mm OD x 1.5mm Wall 1pk	14
1.00	TUBING	10mm OD x 1.5mm Wall 1pk	12
1.00	TUBING	11mm OD x 1.5mm Wall 1pk	11
1.00	TUBING	12mm OD x 1.5mm Wall 1pk	11
1.00	TUBING	14mm OD x 1.5mm Wall 1pk	9
1.00	TUBING	16mm OD x 1.8mm Wall 1pk	13.1
1.00	TUBING	18mm OD x 1.8mm Wall 1pk	15
1.00	TUBING	19mm OD x 1.8mm Wall 1pk	13.7
1.00	TUBING	22mm OD x 1.8mm Wall 1pk	11.5
1.00	TUBING	26mm OD x 2mm Wall 1pk	12.6
1.00	TUBING	28mm OD x 2mm Wall 1pk	11
1.00	TUBING	38mm OD x 2mm Wall 1pk	15
1.00	TUBING	40mm OD x 2.3mm Wall 1pk	14.6
1.00	TUBING	42mm OD x 2.3mm Wall 1pk	15.3
1.00	TUBING	50mm OD x 2.5mm Wall 1pk	15
1.00	TUBING	65mm OD x 3.2mm Wall 1pk	8.3
1.00	TUBING	70mm OD x 4.2mm Wall 1pk	11.6
1.00	TUBING	80mm OD x 3.5mm Wall 1pk	11.3
Heavy Wall :-			
1.00	TUBING	12mm OD x 2.2mm Wall 1pk	9.5
1.00	TUBING	14mm OD x 2.2mm Wall 1pk	8.2
1.00	TUBING	16mm OD x 2.5mm Wall 1pk	8.8
1.00	TUBING	19mm OD x 2.5mm Wall 1pk	15.6
1.00	TUBING	22mm OD x 2.5mm Wall 1pk	15.4
1.00	TUBING	28mm OD x 2.8mm Wall 1pk	14.8
1.00	TUBING	42mm OD x 3.2mm Wall 1pk	11.7
1.00	TUBING	46mm OD x 3.2mm Wall 1pk	13
1.00	TUBING	70mm OD x 5mm Wall 1pk	13.6
1.00	TUBING	90mm OD x 7mm Wall 1pk	18.3
Capillary			

1.00	TUBING	Capillary 5mm OD x 0.6mm ID 1pk	10
1.00	TUBING	Capillary 7mm OD x 1.2mm ID 1pk	10
1.00	TUBING	Capillary 7mm OD x 2.7mm ID 1pk	10

Table 4-1: Tubing, rods and capillaries

4.4 Wide range of applications :

Do you know some of the many ways where tubing is used?

Here are a few examples :

- Laboratory – tubing for high thermal-shock and corrosion resistance.
- Process plant engineering
 - ✚ Chemical equipment: geometrically precise tubing for commercial plants
 - ✚ Sight glasses: tubing for consistently stable clarity
 - ✚ Photobioreactors: tubing with high transmission for ideal algae growth
 - ✚ Ozone generators: tubing as insulator
 - ✚ Heat exchangers: tubing for high corrosion resistance
 - ✚ Ventilation systems: tubing for optimum effect and long life
- Art & design, safety and more
 - ✚ Product presentation : tubing with high transparency and resistance to scratches.
 - ✚ Giftware: tubing as easily processed primary material
 - ✚ Explosion proof lighting: tubing for durability in corrosive environments
 - ✚ Interior design: tubing for modern and innovative design solutions

5 INDUSTRIAL CHEMICALS

Lab Chemicals understands the importance of quality in the industries and that is exactly what we bring to you- by always delivering pure chemicals. Below is a list of chemicals that we can provide:

1. Ammonium Sulphate	2. Copper Sulphate	3. Hydrogen Phosphate	4. N Bromosuccinimide
5. Anisole	6. Cuprous Chloride	7. Hydroquinone	8. N Chlorosuccinimide
9. Ascorbic Acid	10. Cyclohexanone	11. Industrial Salt	12. Nitric Acid
13. Barium Carbonate	14. Denatonium Benzoate	15. Isopropyl Alcohol	16. Oil Can
17. Barium Chloride	18. Diammonium Phosphate	19. Isopropyl Palmitate	20. Oleic Acid
21. Barium Hydroxide	22. Dicalcium Phosphate	23. Lactic Acid	24. Oxalic Acid
25. Barium Sulphate	26. Diethylene Glycol	27. Lead Fluoborate	28. Para Tertiary Butyl Catechol
29. Benzoic Acid	30. Dioctyl Phthalate	31. Lead Monoxide	32. Peracetic Acid
33. Benzyl Benzoate	34. Dipotassium Phosphate	35. Lead Nitrate	36. Phosphorous Acid
37. Bleaching Powder	38. Dipropylene Glycol	39. Lead Oxide	40. Poly Aluminium Chloride
41. Borax	42. Disodium Hydrogen Phosphate	43. Lithium Bromide	44. Potassium
45. Boric Acid	46. Disodium Phosphate	47. Lithium Carbonate	48. Potassium Bicarbonate
49. Butyl Acrylate	50. Edta Acid	51. Lithium Chloride	52. Potassium Carbonate
53. Calcium Carbonate	54. Edta Tetrasodium	55. Lithium Hydroxide	56. Potassium Chloride
57. Calcium Chloride	58. Ethyl Acetate	59. Magnesium Carbonate	60. Potassium Citrate
61. Calcium Fluoride	62. Ethylene Glycol	63. Magnesium Chloride	64. Potassium Dichromate
65. Calcium Gluconate	66. Ethylenediamine	67. Magnesium Fluoride	68. Potassium Fluoborate
69. Calcium Hydroxide	70. Ferric Ammonium Citrate	71. Magnesium Hydroxide	72. Potassium Fluoride
73. Calcium Hypochlorite	74. Ferric Chloride	75. Magnesium Nitrate	76. Potassium Hydroxide
77. Calcium Nitrate	78. Ferro Boron	79. Magnesium Oxide	80. Potassium Iodide
81. Calcium Oxide	82. Ferro Manganese	83. Magnesium Phosphate	84. Potassium Sulphate
85. Calcium Propionate	86. Ferrous Ascorbate	87. Magnesium Stearate	88. Potassium Tetraborate
89. Calcium Stearate	90. Ferrous Chloride	91. Magnesium Sulphate	92. Propylene Glycol
93. Caustic Soda	94. Ferrous Edta	95. Manganese Carbonate	96. Rapeseed Oil

97. Chromic Acid	98. Ferrous Fumarate	99. Manganese Oxide	100. Salt
101. Chromium Oxide	102. Ferrous Sulphate	103. Manganese Sulphate	104. Silicon Dioxide
105. Chromium Sulphate	106. Fluoboric Acid	107. Methyl Bromide	108. Sodium
109. Citric Acid	110. Folic Acid	111. Methyl Chloride	112. Sodium Acetate
113. Cobalt Chloride	114. Formic Acid	115. Methyl Ethyl Ketone	116. Sodium Benzoate
117. Cobalt Sulphate	118. Fumaric Acid	119. Methyl Paraben	120. Sodium Bisulphate
121. Copper Carbonate	122. Glycerine	123. Monoammonium Phosphate	124. Sodium Borohydride
125. Copper Nitrate	126. Hydrated Lime	127. Monocalcium Phosphate	128. Sodium Bromide
129. Copper Oxide	130. Hydrogen Peroxide	131. Monopotassium Phosphate	132. Sodium Carbonate
133. Sodium Chloride	134. Sodium Nitrates	135. Stearate	136. Titanium
137. Sodium Chlorite	138. Sodium Nitrite	139. Stearic Acid	140. Tricalcium Phosphate
141. Sodium Citrate	142. Sodium Perborate	143. Sulphamic Acid	144. Trichloroethylene
145. Sodium Cryolite	146. Sodium Propionate	147. Sulphonic Acid	148. Triethylene Glycol
149. Sodium Dichromate	150. Sodium Silicate	151. Tetrasodium Pyrophosphate	152. Trisodium Phosphate
153. Sodium Fluoride	154. Sodium Silico Fluoride	155. Sodium Metasilicate	156. Titanium
157. Sodium Formate	158. Sodium Sulphate	159. Sodium Molybdate	160.
161. Sodium Gluconate	162. Sodium Sulphide	163. Sodium Iodide	164. Stannous Chloride
165. Sodium Hydroxide	166. Sodium Tripolyphosphate	167. Titanium dioxide	168. SLES

Table 5-1: Industrial Chemicals

6 FINE CHEMICALS

Aliphatic Amines

- 3-Methoxy Propyl Amine
- 3-Ethoxy Propyl Amine
- Isopropoxy Propyl Amine
- 3-Phenoxy Propyl Amine
- Cyclohexyl Amino Propyl Amine
- Dimethyl Amino Propyl Amine
- Methyl Amino Propyl Amine
- Cyclohexyl Amine
- n,n-Dimethyl Butyl Amine
- n-Pentyl Amine
- n-Morpholine Propyl Amine
- Piperidine
- 3-Cyclohexyl Amino Propyl Amine

The copyright in this document is the property of Lab Chemicals International Ltd and the contents may not be reproduced or revealed to third parties without prior permission of that company in writing.

- n-Pentyl Amine
- 3-Butoxy Propyl Amine
- 3-Methyl Amino Propyl Amine [MAPA]
- Di-n-propylamine
- n-Propylamine
- Di-n-butylamine
- 3-Isopropoxypropylamine [IPPA]
- 3-Methoxypropylamine [MOPA]
- Dimethylaminopropylamine [DMAPA]
- N,N-Dimethyldipropylamine
- 1,3-Bis(methylamino)propane
- Morpholine
- N-Methyl Morpholine [NMM]
- N-Ethyl Morpholine [NEM]
- N-Acetyl Morpholine
- N-Formyl Morpholine
- Furfurylamine
- N,N-Dimethyl-n-Butylamine (DMBA)
- 3- Amino Propyl Imidazole

Aromatic Amines

- Benzyl Amine
- Di Benzyl Amine
- Tri Benzyl Amine
- n,n-Dimethyl Benzyl Amine
- β-Phenyl Ethyl Amine
- Benzhydryl Amine
- 4-Methoxy Benzyl Amine
- Beta-Phenyl Ethyl Amine
- 4-Methoxy Phenyl Ethyl Amine
- P-Toluidine
- P-hydroxy Benzyl Amine
- P-Methoxy Benzyl Amine
- P-Methoxy Phenyl Ethyl Amine
- Tyramine HCL
- Tyramine Base

Aliphatic Nitriles

- Propionitrile
- Valeronitrile
- Butyronitrile
- Lauryl Nitrile
- 3-Methoxy Propionitrile
- 3-Ethoxy Propionitrile
- 3-Isopropoxy Propionitrile
- 3-Cyclohexyl Propionitrile
- 3-Dimethyl Amino Propionitrile

Aromatic Nitriles

- 3-Phenoxy Propionitrile
- P-Hydroxy Phenyl Acetonitrile
- P-Methoxy Phenyl Acetonitrile

Halides

- n - Butyl Chloride
- Cyclohexyl Chloride
- Bis(2-chloroethyl) ether
- 2-(2-Chloroethoxy) Ethanol

Alcohols

- P-Hydroxy Benzyl Alcohol
- P-Methoxy Benzyl Alcohol
- M-Phenoxy Benzyl Alcohol
- Di-ISO Butyl Carbinol
- Methyl ISO Butyl Carbinol
- 2-Methyl Cyclohexanol
- 2-Phenoxy Ethanol
- Cyclohexanol
- Thiophene -2- Ethanol
- 3- Methoxy -1- Propanol

Cyclohexanols

- Cyclohexanol
- Dicyclohexyl Carbinol
- 4-Acetamido Cyclohexanol
- 2-Methyl Cyclohexanol cis / trans
- 4-Methyl Cyclohexanol
- Tert Butyl Cyclohexanol (cis + trans)
- P-tert Butyl Cyclohexanol (cis + trans)

Cyclohexanones

- 4 - Methyl Cyclohexanone
- Di cyclohexyl ketone

Acids & Esters

- P-Para Hydroxy Phenyl Acetic Acid Methyl Ester
- P-Para Methoxy Phenyl Acetic Acid Methyl Ester
- 2-Methyl Cyclohexyl Acetate
- 4-Methyl Cyclohexyl Acetate
- Glycerol Tri acetate (Triacetin)
- 3-Phenoxy Propionic Acid
- Valeric Acid
- 4-Hydroxy Phenyl Acetic Acid
- 4-Methoxy Phenyl Acetic Acid
- 2-Methyl Cyclohexyl Acetate
- Glycerol Tri Acetate (Triacetin)

Advanced Intermediates

- Ethyl Oleate EP/BP/USP
- 1-Hydroxy Cyclohexyl -4- Methoxy Phenyl Acetonitrile (Venlafaxine.HCL)
- 1-[2-(Amino) -1- (4-Methoxy Phenyl) ethyl] Cyclohexanol.HCL (Venlafaxine.HCL)
- Ethyl] -4- Methoxy Benzene Acetamide (Dextromethorphan.HBr)
- N-[2-(1-cyclohexenyl)Ethyl]-4-methoxy benzene Acetamide

Amine Hydrochlorides

- Tyramine Hcl
- b- Phenyl Ethyl Amine Hydrochloride
- Benzamidine Hydrochloride
- 1-(2-Chloroethyl) Piperidine Hydrochloride
- N-(2-Chloroethyl) Morpholine Hydrochloride
- 2-(Diethylamino) ethyl chloride Hydrochloride

New Products

- 2-acetyl-gamma-butyrolactone
- 2-hydroxyethyl piperazine
- 2-Hydroxy Phenyl Acetic Acid
- 2-Phenoxy Ethanol
- 2,6-Xylidine
- 3-Methoxy-1-Propanol
- Benzyl Ethanol Amine
- Thiophene 2 Aldehyde
- Dibutyl Ethanol Amine
- Diethyl Amino Ethanol
- Dimethyl Amino Ethanol
- Furfuryl Amine
- N-Methyl Benzyl Amine
- N-2-(Hydroxyethyl) Morpholine
- N Butyl Ethanol Amine
- Piperidine Ethanol
- Phenyl Ethyl Alcohol
- Tertiary Butyl Diethanol Amine
- Thiophene-2-Ethanol

Ethanol Amines

- N-tert-Butyldiethanolamine
- N-2(Hydroxyethyl) Piperidine
- N-2(Hydroxyethyl) Morpholine
- 2-(Dibutylamino)ethanol
- N-Butyl Ethanol Amine
- Di Ethyl Ethanol Amine
- N-Benzyl Ethanol Amine
- N-Propyl Diethanol Amine
- N-Propyl Monoethanol Amine
- Triisopropanolamine-85%

Others

- Tyramine Base
- Cyclohexene
- 1-Methyl Cyclohexene
- 3-Methyl Cyclohexene
- 4-Hydroxy Phenyl Acetamide
- Ethyl-3-Ethoxypropionate
- Tris-(Nonylphenyl) Phosphite (TNPP)
- 2-Butyl-4-chloro-5-formyldimidazole (BCFI)
- Tris (2-ethylhexyl) Phosphate [TOP]
- N-Methyl Morpholine Oxide - 50 % & 60% [NMMO]
- 3-Methyl-2-Thiophene Aldehyde
- 2-Allylphenol
- Thiophene-2-Aldehyde
- Tetrabutyl Urea (TBU)
- Cyclohexene Oxide
- 4-Methyl-2-(1-Methylcyclohexyl)Phenol
- N,N-Bis(2-hydroxyethyl)isopropanolamine
- 2-Acetyl Gamma Butyrolactone (ABL)
- 2-Ethyl Anthraquinone
- 4-Methoxy Phenyl Acetonitrile
- Piperidine

Speciality Chemicals

- Fatty Acids
- Fatty Amides
- Fatty Amines
- Fatty Di-amines
- Fatty Tertiary amines
- Fatty Polyamines
- Fatty Amine Ethoxylates
- Fatty Ammonium
- Performance Chemicals

7 TEST PAPERS

Our products are used in a wide variety of applications including, the laboratory, education, food & beverage and medical. We are known and recognised for providing leading service, reliability and high quality products.

Effortless pH determination: Measuring pH without the use of any instruments, it is easy to use Test Papers pH indicator strips and papers.

The pH tests are suitable for environmental analysis, industrial in-process controls and within the education setting.

7.1 pH indicator papers

Our pH papers are procured and supplied using high quality papers which are impregnated with mixed indicator solutions, dried and then cut to size. In general our pH papers are supplied in rolls or books which are both convenient but also protect against external effects such as moisture, light and ambient gases, resulting in a prolonged shelf life.

The copyright in this document is the property of Lab Chemicals International Ltd and the contents may not be reproduced or revealed to third parties without prior permission of that company in writing.

Second Floor - Berkeley Square House, Berkeley Square - Mayfair, London, W1J 6BD.

We can offer litmus papers for the routine management of acid or alkaline reactions in industry.

These papers do not require the need for a colour chart as their purpose is to demonstrate qualitative analysis in a simple 'yes' and 'no' manner. They will not provide accurate pH measurement, but will change from one colour to another at a set pH value. These user friendly test papers are suitable for many industrial and educational applications.



Figure 7-1 pH indicator strips and test papers

Advantages of Johnson Test Papers pH tests

- Intense colour development
- Precise results because of our differentiated colour graduations
- Quick, on the spot results
- Calibration and quality assurance by NIST certified pH buffer solutions

7.2 pH Indicator Strips - non-bleeding

Our non-bleeding pH Indicator Strips are procured and supplied with special indicator dyes which are bound to the reagent paper. This special method of manufacturing gives certain advantages over the pH Indicator Papers; the indicators do not bleed and the indicator strips can be left in solution for a prolonged time without contaminating the test solution.

7.3 J-QUANT® test strips

J-QUANT® Semi Quantitative Test Strips are known for their accuracy and quality. They provide semi-quantitative results for ions, organic compounds, inorganic compounds and match the ever demanding needs of a rapid test.

Laboratory costs and time can be lowered by a substantial amount given the information they provide as a first-phase test.



Figure 7-2 J-QUANT® test strips

Advantages of J-QUANT® test strips

- Fast and easy results
- Easy to handle for on the spot results
- Wide range of tests
- Ideal for an indication - saving time and cost

7.4 Qualitative Filter Papers

Our paper can be supplied as rolls, sheets or discs and covers all requirements for qualitative analysis no matter what the filtration task may be.



The copyright in this document is the property of Lab Chemicals International Ltd and the contents may not be reproduced or revealed to third parties without prior permission of that company in writing.

Second Floor - Berkeley Square House, Berkeley Square - Mayfair, London, W1J 6BD.

Figure 7-3 Qualitative Filter Papers

Advantage :

- Qualitative Analysis
- Made from refined pulp and linters > 95% alpha cellulose content
- Low Ash Content of 0.06%
- Untreated
- Consistent Performance
- Custom Cut
- Bulk Packaging

7.4.1 Standard Qualitative Filter Papers

Standard Qualitative Filter Papers are used for low gravity, or even quadrant-folded application. Standard Filter Papers have a higher level of α - cellulose than other filter papers, this means that it will weaken when the paper has become introduced to water. We do not recommend Standard Filter Papers if wet handling or vacuum work is necessary. In routine quadrant-folded applications the underline strength of standard (untreated) grades does not present an issue.

Grade	Whatman Equivalent	Speed	Thickness (mm)	Pore Size (μ M)	Weight (g/m ²)	Filtration Speed (sec)	Burst Strength (kg/cm ²)
301	= No.5	Very Slow Filtering	0.14	2-3	84	180	> 0.30
302	= No.3	Medium Filtering	0.3	12-16	150	65	3.90
303	= No.2	Medium Filtering	0.16	5-8	87	50	> 0.10
304	= No.1	Medium Filtering	0.16	5-13	73	88	1.95
305	= No.4	Fast Filtering	0.20	12-15	84	10	> 0.30

Table 7-1: Standard Qualitative Filter Papers

7.4.2 Wet-strengthened Qualitative Filter Papers

Wet-strengthened filter papers are manufactured from a majority of alpha-cellulose. The smooth surface allow a fibre free filtration. They feature a high wet strength and can also be used in the filtration of strong alkaline or acid solutions. Due to their high mechanical strength , they are suited to applications where the residue is removed from the filter, for example with a spatula or jet of water.

Grade	Whatman Equivalent	Speed	Thickness (mm)	Pore Size (μ M)	Weight (g/m ²)	Filtration Speed (sec*)	Burst Strength (kg/cm ²)
322	= No.93	Fast Filtration	0.15	10-20	64	50	1.45
323	= No.91	Fast Filtration	0.09	8-10	75	50	1.45
324	= No.113	Fast, creped	0.43	20	130	50	1.45
325	= No.114	Very Fast Filtration	0.17	17-30	73	22	1.25

Table 7-2: Wet-strengthened Qualitative Filter Papers

Circles, Folded Filter and Sheets forms with various sizes are available. **Whatman equivalent and Johnson Test paper grade** are also shown in the above table. Other qualitative grades available upon demand. Please contact us for further information.

7.4.3 Ashless Filter Papers

These standard Ashless grades are very pure filters suitable for routine quantitative gravimetric techniques and in the preparation of samples for use in analysis involving instrumental techniques. Johnson Test Papers offers a complete range of Ashless Quantitative Cellulose Filter Papers with a choice of pore size, filtration speeds, and filter thickness's. They are available in different filter sizes from small circle formats to large sheets. We can also make custom sized filters to meet your specific needs.

Grade	Whatman Equivalent	Speed	Thickness (mm)	Pore Size (µM)	Weight (g/m ²)	Filtration Speed (sec*)	Burst Strength (kg/cm ²)
351	= No.42	Very Slow Filtering	0.14	2-3	84	180	> 0.20
352	= No.40	Medium Filtering	0.16	5-8	84	50	> 0.20
353	= No.43	Medium Fast filtering	0.17	8-12	84	20	< 0.20
354	= No.41	Fast Filtering	0.18	12-15	84	10	> 0.20

Table 7-3: Ashless Filter Papers

7.4.4 Hardened Ashless Filter Papers

These wet strengthened hard filter papers are procured and supplied from refined pulp and linters and have a low ash content of <0.01%. These specially treated hardened ashless grades are available for critical quantitative analytical techniques requiring increased wet-strength and handling capacity. These high purity filter papers have a tough, smooth surface free of loose fibres and are ideal for a range of critical filtration procedures such as collecting wet precipitates in pressure filtrations or in Buchner funnels in gravimetric analysis of samples . The smooth surface of the filter allows the recovery of most precipitates without the fibres adhering to them. Due to their high mechanical strength in wet conditions they are particularly suited for applications, where the residue is removed from the filter.

Grade	Whatman Equivalent	Speed	Thickness (mm)	Pore Size (µM)	Weight (g/m ²)	Filtration Speed (sec*)	Burst Strength (kg/cm ²)
371	= No.50	Slow	0.25	7-9	80	180	>0.3
372	= No.52	Medium	0.27	8-12	80	50	>0.3
373	= No.54	Fast	0.29	12-16	80	10	>0.3

Table 7-4: Hardened Ashless Filter Papers

Circles, Folded Filter and Sheets forms with various sizes are available. **Whatman equivalent and Johnson Test paper grade** are also shown in the above table. Other qualitative grades available upon demand. Please contact us for further information.

7.5 Blotting, Chromatography and Electrophoresis Papers, Blotting Membranes

We offer a complete line of high quality chromatography, electrophoresis and blotting papers. These papers are made of high purity cotton linters, with no additives to prevent contamination transfer, and produced in a wide range of absorption levels for optimal wicking, drying and blotting. The raw materials used give these papers perfect structure and regularity in the distribution and position of the fibres, allowing perfect uniformity of the physical properties of each grade.

They are suitable for chromatographic analysis and sample preparation and also for blotting methods with gel (Southern, Northern and Western Blots). Johnson Test Papers complete its offer with popular cellulose nitrate blotting membranes which has an excellent affinity for proteins, high blocking ability, and compatibility with a vast variety of detection methods.

Various sheet sizes available. Please contact for more information.

7.6 Microfibre Filters

We can offer a wide range of binder-free glass and quartz microfibre filters dedicated for environmental analyses in water or air control. Glass and quartz microfibre filters meet the highest requirements for applications including determination of suspended solids in water, PM 10 air monitoring, emission control at high temperature.



Figure 7-4 Microfibre Filters

7.6.1 Glass Fibre Filters

We offer a full range of glass microfibre filters. These filters are made with 100% borosilicate micro-glass fibres and are binder free. They are chemically resistant towards most organic and inorganic solvents (except HF) as well as acids and alkaline solutions of high concentration. They resist temperatures up to 500°C. Due to their very fine fibres, combined with good permeability they are particularly suitable for micro-filtration. They are non-hygroscopic and biologically inert. They can be used in various fields, especially when fine fast filtration and high loading capacity is required. Applications for Johnson Test Papers glass microfibre filters include environmental analysis for water, wastewater, testing of soils, air pollution and monitoring, research and process biochemistry, and gravimetric analysis involving ignition of samples. Johnson Test Papers glass microfibre filters are also found in the filtration of hot gases and liquids, and in pre-filtration.

Grade	Whatman Equivalent	Speed	Thickness (mm)	Pore Size (µM)	Weight (g/m ²)	Filtration Speed (sec)	Burst Strength (Kg/cm ²)
50A	= GFA	Fast, high loading	0.26	1.6	52	60	20
50B	= GFB	Medium / Fast, very high loading	0.70	1.0	143	200	50
50C	= GFC	Medium / Fast, very high loading	0.26	1.2	52	100	20
50D	= GFD	Slow, very high loading	0.53	2.7	120	30	20
50AH	= 934 AH	Fast	0.28	1.5	65	60	20

Table 7-5: Glass Fibre Filters

7.6.2 Quartz Microfibre Filters - binder free

We offer extremely pure 100% quartz filters with temperature stability up to 900°C which makes these filters ideal for use in applications like hot stack measurements. The heat conditioned QF889 grade is the first choice when the

The copyright in this document is the property of Lab Chemicals International Ltd and the contents may not be reproduced or revealed to third parties without prior permission of that company in writing.

highest level of purity is required like for trace element analysis. QF890 is recommended for PM10 monitoring according to EPA standards and ISO 23210.

7.7 Extraction Thimbles

We offer an extensive range of extraction thimbles available in both cellulose and glass fibre and in a variety of dimensions. We also offer cellulose thimbles specifically sized for automated extraction equipment.

Test Papers cellulose extraction thimbles are widely used in Soxhlet extraction equipment, a technique for the analysis of fats or pesticides in food and soil materials. Cellulose thimbles are also used for crude oil sampling to determine amounts of oil in oil water slurries. Glass microfibre extraction thimbles are used for high-temperature applications such as analysis of smoke stack gases for environmental monitoring or when solvents incompatible with cellulose thimbles are needed.



Figure 7-5 Extraction Thimbles

7.7.1 Cellulose Extraction Thimbles

We offer an extensive range of cellulose extraction thimbles. They are available in a variety of dimensions for optimisation of retention, rigidity and wet or dry strength. Our thimbles are known for their purity and consistent high quality - made with 100% high pure cotton linters fibres. Cellulose thimbles are high quality sample reservoirs for quality control, research and analytical applications, where solvent extraction of solids and semi-solids must be carried out. They are suitable for all extractors systems but are widely used in Soxhlet extraction units and provide a safe, convenient and efficient method of solvent extraction of semi-solids and solids. Soxhlet extraction is a technique widely used for analysis of fats and pesticides in food and soil specimens and in many other procedures that involve a solid-liquid extraction. It provides a safe method of extraction with toxic and other noxious solvents. Our thimbles are also used in air and waste gas analysis especially in cold stack air monitoring for collecting solid particles (dust).

7.7.2 Glass Fibre Extraction Thimbles

We offer an extensive range of high purity borosilicate glass fibre extraction thimbles without inorganic binder and in a variety of dimensions. They are completely free from binders and additives and have the same properties as filters made of this same material i.e. chemical stability, maximum temperature use of up to 500°C, high permeability against the passing of air, good load capacity and retention of particles and stability in weight. They are used in aggressive solvent extractions when the solvent is incompatible with cellulose thimbles. All of these properties above make them very appropriate for the use in controls of emission at high temperature, pre filtration of gases in analysers and gravimetric analysis of dust in gases. Our glass fibre extraction thimbles are also very well suited for smoke stack gas monitoring because of their very high particle retention of 0.7micron and typical thickness of 2.0mm. They are also used for the analysis of pesticide residues, dust analysis in hot exhaust gases and analysis of oil and grease in solid waste. These thimbles are available in a wide range of sizes to suit your application and fit standard soxhlet extractors.

7.8 Micro Filtration

Microfiltration is a type of physical filtration process where a contaminated fluid is passed through a special pore-sized membrane to separate micro-organisms and suspended particles from process liquid. Microfiltration usually serves as a pre-treatment for other separation processes such as ultra-filtration, and a post-treatment for granular media filtration. Membranes enable a very convenient, fast and economical separation and also often used as a neutral sample support for further analysis.

Test Papers offers a complete line of microfiltration products for laboratory applications including membranes and syringe filters.

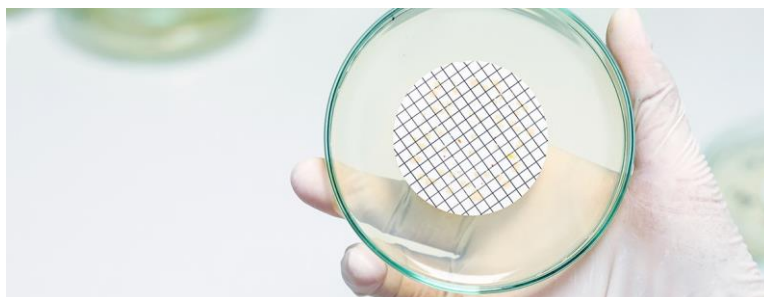


Figure 7-6 Micro Filtration

7.8.1 Sterile Membrane Filters

Test Papers offers gridded sterile membranes packed individually specifically designed to save time when performing colony counting and microbiological quality control. These membranes are available in a 47 mm ready-to-use standard size and support optimum colony growth.

7.8.2 Non-Sterile Membrane Filters

Test Papers supplies a wide range of plain white non-sterile microfiltration membranes used to collect or remove particles and microorganisms from various organic solvents and aqueous solutions. Sold by pack of 100 filters.

7.9 Syringe Filters

Test Papers offers a wide variety of syringe filters for convenient sample preparation and fluid sterilisation. Cellulose Acetate (CA) and Polyether Sulphone (PES) membranes are ideal for samples containing proteins and generally

recommended for aqueous solutions filtration. Nylon (NY), PTFE and Regenerated Cellulose (RC) membranes are recommended for organic solvents filtration. Glass fibre prefilter and a cellulose acetate membrane are recommended for highly loaded aqueous solutions.

Syringe filters are used for numerous pharmaceutical, environmental, biotechnology, food/beverage, and agricultural industries. They can be used for filtration of suspended matter from liquid samples or gases. Our syringe filters accommodate a variety of sample matrices for demanding sample preparation and microfiltration applications, such as: sample clarification, filtration of solvents used for chromatography applications, sterile filtration, sterile venting and medical applications such as filtration of biological samples, tissue cultures, proteins and nucleic acids.



Figure 7-7 Syringe Filters

All syringe filter are available in packs of 100 pcs.

All 25 mm syringe filters available with a glass fibre prefilter (Combi Syringe Filter)

7.10 Cross Reference Chart

Conversion charts are provided to guide you in selecting the Test Papers grade that is most closely equivalent to your current brand of filter paper. Please note that grade comparisons between manufacturers are approximations based upon generally accepted industry practices. No two grades from different manufacturers are exact matches in terms of physical properties. For additional assistance in interpreting cross-references, or if you need further data, please contact customer service.

Standard Qualitative Filter Papers

Johnson	Whatman	MN	Advantec	CHM	Floron	Hahnemuhle	Sartorius
304	1	615	-	F1001	601	595	292
303	2	616md	231	F1002	113	597	292a
302	3	618	131	F1003	1103	593	2S/h
305	4	617	1	F1004	111	604	288
301	5	619	235	F1005	115	602h	293

Wet-strengthened Qualitative Filter Papers

Johnson	Whatman	MN	Advantec	CHM	Floron	Hahnemuhle	Sartorius
321	93	612	-	F1093	600	0859	3m/n
322	93	615	-	F1093	600	0859	3m/n
323	91	620	101	F1091	1591	610	602/N
324	113	601	-	F1113	302	520bil	-
325	114	713	-	F1114	122	1450nf	-

Ashless Quantitative Filter Papers

Johnson	Whatman	MN	Advantec	CHM	Floron	Hahnemuhle	Sartorius
352	40	640m	5B	F2040	13	589/5	390
354	41	640w	5A	F2041	11	589/1	389
351	42	640d	-	F2042	15	589/3	391
353	43	640md	3	F2043	12	589/2.589/4	392

Wet-strengthened Ashless Quantitative Filter Papers

Johnson	Whatman	MN	Advantec	CHM	Floron	Hahnemuhle	Sartorius
371	50/542	640de	4A	F2142	155	1575	1391
372	52/540	616	-	F2140	153	1574	1392
373	54/541	-	-	F2141	151	1573	1388

Microfibre Filters

Johnson	Whatman	MN	Advantec	CHM	Floron	Hahnemuhle	Sartorius
50A	GFA	GF-1	GA-55	GF1	259	GF 50	GMF1
50B	GFB	GF-2	GB-140	GF2	260	GF 51	GMF2
50C	GFC	GF-3	GC-50	GF3	261	GF 52	GMF3
50D	GFD	-	GD-120	GF4	262	GF 53	GMF4
50AH	934 AH	-	-	-	-	-	-

Table 7-6: Cross Reference Chart

8 LABORATORY VISCOMETER

Lab Chemicals now offer a progressive range of viscometers which are used to know the viscosity of different fluids which essentially characterises the fluid's internal friction and is a fundamental property to be measured.

All our laboratory viscometers are accurate within +/-1.0% of the measurement range in use and have a repeatability with +/-0.2%. Tests can be duplicated anywhere in the world when the same model is used.



Figure 8-1 DV2T EXTRA Touch screen Viscometer

Different types of viscometer we can supply :

- BF35 Viscometer
- Dial Reading
- DV-E
- DV1
- DV2T
- DV2T EXTRA
- DV3T

9 ENVIRONMENTAL - GEOPHYSICAL EQUIPMENT

Lab Chemicals now offer a wide range of geophysical equipment.

1. Gamma Ray System
2. Borehole Resistivity System
3. Sand Shaker Portable Handheld Sieve Grain-Size Analyzer
4. Geophysical Logger
5. Syscal Pro Switch 96
6. Winch Assembly with 400m cables (complete set)
7. RG Micrologger2
8. Micrologger 12V PSU (Black Box)
9. Winch and accesories
10. Calibrators and accesories

The Borehole Resistivity System is a rugged, portable, hand-operated downhole logger which measures both apparent resistivity and the natural self-potential (SP).

Applications include mineral exploration, subsurface mapping (isopachs), locating fresh and salt-water bearing information; lithologic and structural correlation between wells, and well construction

The copyright in this document is the property of Lab Chemicals International Ltd and the contents may not be reproduced or revealed to third parties without prior permission of that company in writing.



Figure 9-1 Logger



Figure 9-2 Borehole Resistivity System

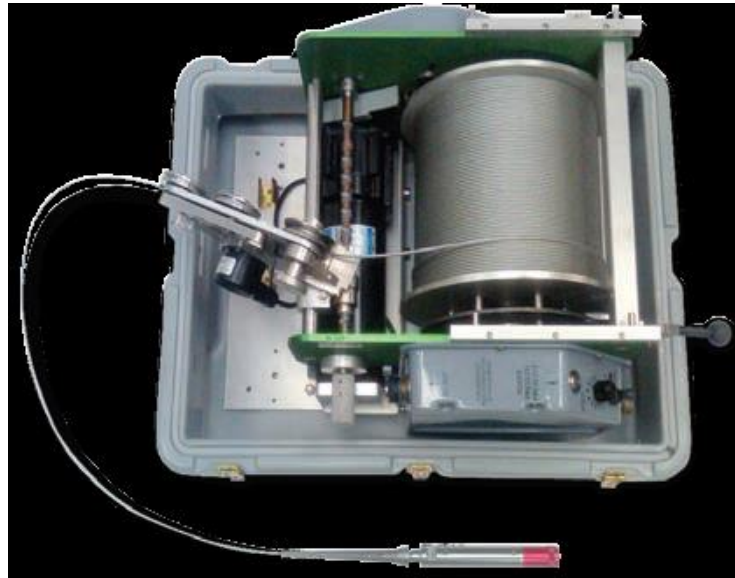


Figure 9-3 Winches

FEATURES - Borehole Resistivity System

- Measures both resistivity and • self-potential (SP)
- Resistivity is read in a range of 0-10,000 ohm-feet
- Self-potential is read in a range of 1-1,000 millivolts, positive or negative
- Battery powered readout instrument, and indicator for resistivity and SP in a rugged water tight case
- 500 feet (152 m) of four-conductor downhole logging cable mounted on a portable hand reel
- 1" (2.5 cm) diameter probe assembly
- Two single-conductor insulated surface lines on storage reels

Our geophysical equipment are available in various specifications, accessories like instrument, cable and cable heads, reel, probe assembly, consumables and even packaged to your own needs. Please ask for further information.

10 WATER TESTING SOLUTIONS

Lab Chemicals now offer a total solution for water-testing products, service, and support. All our products are **worldwide approved and accepted for drinking water, bottled water, fresh bathing water, spas, pools, surface water, groundwater, drinking water for poultry and livestock, fresh and marine bathing water and wastewater, recreational water**

10.1 The new Quanti-Tray* Sealer PLUS

Saves time from warm-up to cleanup

- Warms up 80% faster, in just 2–3 minutes†
- Improves work flow by sealing each tray faster†
- Makes cleaning simple with a new easy-access panel
- Uses less energy with features like sleep mode and LED lights†
- Designed to last, with world-class quality



Figure 10-1 Quanti-Tray* Sealer PLUS

Products are approved - Worldwide

10.2 Technology

Colilert*, **Colilert*-18**, **Colisure***, **Enterolert***, **Enterolert*-E**, **Enterolert*-DW**, **Pseudalert***, **Legiolert***, and **HPC for Quanti-Tray*** reagents come in snap packs. This packaging allows for easy, compact storage of our reagents at room temperature. Our “five-across” format requires minimal shelf space and offers a wide spout for fast, easy pouring. The plastic casing acts as a moisture barrier, preserving the product without the need for refrigeration. To make your compliance documentation easily traceable, we’ve printed a lot number and an expiration date at the top of each snap pack.

Products :

Colilert

Analyte - Total coliforms and *E. coli*

Time to result - 24 hours

Colilert-18

Analyte - Total coliforms and *E. coli* or fecal coliforms

Time to result - 18 hours

Colisure

Analyte - Total coliforms and *E. coli*

Time to result - 24 hours

Enterolert

Analyte - Enterococci

Time to result - 24 hours

Pseudalert

Analyte – *Pseudomonas aeruginosa*

Time to result - 24 hours

Legiolert

Analyte – *Legionella pneumophila*

Time to result - 7 days



Figure 10-2 Colilert-18 snap pack technology

Colilert-18's enhanced formulation provides coliform/E. coli or fecal coliform results in just 18 hours—6 hours sooner than Colilert. This shorter incubation period allows laboratories to improve work flow by reading afternoon samples the next morning.

Time to result 18 hours

Shelf life Up to 15 months at 2°C–25°C

Colilert-18/Quanti-Tray is the international Organization for Standardization (ISO) standard 9308-2:2012 for detecting total coliform and E. coli in water.

For more information on water microbiology products, please call +44 (0) 207 993 6060 or email. For quote please provide us the product name, kit size and quantity.

11 WATER TESTING SOLUTIONS

We offer a wide range of metalysers for heavy metal analysis such as testing of heavy metals in drinking water and soil testing.

11.1 Metal analysis equipment - Metalyser Field Pro HM3000

Trace2o Metalyser Field Pro HM3000 - Portable heavy metals analyser with tablet PC control, measures the following heavy metals in water to ppb levels:

- Arsenic (III & Total)
- Bismuth,
- Cadmium
- Chromium (VI)
- Cobalt
- Copper
- Gold
- Lead
- Manganese
- Mercury
- Nickel
- Selenium
- Thallium
- Tin
- Zinc

Portable, advanced kit for fast, accurate field measurements.

Uses stripping Uses stripping voltammetric technology. Includes a unique measurement Sonde with integral self-leveling sample beaker and voltammetric cell that contains the sensors and agitator and is connected directly to the

handheld unit via a cable with integral mounting clamp. Built-in temperature sensor. Maintenance free electrode sensors. Integrated tablet PC incorporating Metaware software, displays and stores all of the graphical data, allowing the advanced user to undertake enhanced analysis at site. Data manipulation using the tablet PC allows for extended detection limits and high levels of accuracy. Modular design of measurement Sonde allowing user replacement of components. New application methods for additional parameters can be downloaded to the unit via USB port.

Rechargeable Li-ion battery providing in excess of 50 tests per charge.

Complete kit is robust, dustproof and waterproof to IP67. Temp range: -20°C to +70°C

Alternative power supply via mains adaptor, vehicle cigarette lighter.



Figure 11-1 Metalyser Field Pro HM3000

Limits of Detection (Fresh Water):

- Arsenic (III): 1ppb
- Total Arsenic : 10ppb
- Bismuth : 10ppb
- Cadmium: 1ppb
- Chromium (VI) : 50ppb
- Cobalt : 20ppb
- Copper: 1ppb
- Gold : 10ppb
- Lead: 1ppb
- Manganese: 1ppb
- Mercury: 1ppb
- Nickel : 10ppb

- Selenium : 5ppb
- Thallium : 1ppb
- Tin : 10ppb
- Zinc: 5ppb
- Variability all parameters: 5% at 20ppb

Supplied complete with all accessories and consumables for 50 tests of Cd, Pb, Hg, As, Mn and either Cu or Zn, Separate Reagents available for other measurable parameters. All housed in two robust carrying cases. Mercury components - not restricted as per special provision.

For more information on heavy metal products, please call +44 (0) 207 993 6060 or email. For quote please provide us the product name, specification/size and quantity.

12 MAGNETIC STIRRERS

12.1 Single and multipoint magnetic stirrers

A broad range of single and multipoint magnetic stirrers with up to 32 stirring points allows various and flexible applications in medical, biotechnological and chemical laboratories. Thereby all Labomag magnetic stirrers convince with an attractive design, handiness and functionality:



Figure 12-1 Single and multipoint magnetic stirrers

- available in 3 different housing materials
- 12 varying combinations of stirring points
- 2 selectable stirring point distances
- slim and space saving
- easy to clean and sturdy surfaces
- Made in Germany in consideration of German quality standards

12.2 Three different housing materials

The single and multipoint magnetic stirrers have a completely encapsulated and tight interior space. They are available in 3 qualities:



Figure 12-2 Magnetic stirrers used in different standards

For more information on magnetic stirrer, please call +44 (0) 207 993 6060 or email. For quote please provide us the product name, description – if used for laboratory/industrial/pharmaceutical standard and quantity.

13 CO₂ CELL CULTURE INCUBATORS

Lab Chemicals offer a range of CO₂ Cell Culture Incubators. The range is initially comprised of:- 14, 48, and 170 litre chamber capacities.

All models are close descendants of the first six-sided, direct heat incubator. This has been built on this lineage with smart blending of older and newer technologies to build reliability, performance and choice into the range - at a fair price.

The range is designed around a scalable architecture and offers the following features as standard:-

- Optimum chamber environment, profiled heating creates gentle circulation –no fan or HEPA filter.
- Seamless chamber, with rounded interior corners makes cleaning easy.
- Removable shelves are non-tip.
- Sealed inner glass door allows chamber viewing.
- Temperature range programmable from 4 °C above ambient to 50 °C.
- Infrared CO₂ Sensor, with auto self-referencing function.
- CO₂ range programmable from 0.2 to 20 %.
- Large, easy to read LCD display with LED backlight.
- Removable, seamless, stainless steel humidity reservoir.
- 25mm access port for cable pass-through etc.
- HEPA filtration for all incoming gasses.
- Large range of options allows you to configure each incubator for each task.
- Optional data capture and reporting for QA and verification purposes.
- 3 Year Warranty (extendable).

Control System Safety Features Include:

- Independent over temperature cut-out.

- Calibration and programmed data internally backed up to guard against loss.

13.1 170L, 48L & 14L 2018

MODEL TYPE	DESCRIPTION
170L GOLD	
170L GOLD	STANDARD TEMPERATURE + GLASS DOOR + 25MM ACCESS PORT + DATA LOGGING + RS232
170L HT	HIGH TEMPERATURE DECONTAMINATION
170L O2	O2 (1-19%)
170L O2 (0.1 %)	O2 (0.1-19%)
170L 4DR	4 DOOR SYSTEM (STANDARD GLASS DOOR REPLACED)
170L HUM WARN	HUMIDITY TRAY WARNING SYSTEM
170L COOL	COOLED OPTION (HIGH TEMPERATURE DECONTAMINATION & O2 0.1% OPTIONS NOT AVAILABLE)
170L SILVER	
170L SILVER	STANDARD TEMPERATURE + GLASS DOOR + 25MM ACCESS PORT - NO DATA LOGGING OR RS232
170L HT	HIGH TEMPERATURE DECONTAMINATION
170L RS232	RS232
170L 4DR	4 DOOR SYSTEM (STANDARD GLASS DOOR DELETED)
170L HUM WARN	HUMIDITY TRAY WARNING SYSTEM
48L GOLD	
48L GOLD	STANDARD TEMPERATURE + GLASS DOOR + 25MM ACCESS PORT + DATA LOGGING + RS232
48L HT	HIGH TEMPERATURE DECONTAMINATION
48L O2	O2 (1-19%)
48L O2 (0.1 %)	O2 (0.1-19%)
48L 2DR	SPLIT DOOR SYSTEM (STD GLASS DOOR DELETED)
48L HUM WARN	HUMIDITY TRAY WARNING SYSTEM
48L SILVER	
48L SILVER	STANDARD TEMPERATURE + GLASS DOOR + 25MM ACCESS PORT - NO DATA LOGGING OR RS232
48L HT	HIGH TEMPERATURE DECONTAMINATION
48L RS232	RS232
48L 2DR	SPLIT DOOR SYSTEM (STANDARD GLASS DOOR DELETED)
48L HUM WARN	HUMIDITY TRAY WARNING SYSTEM
14L GOLD	
14L GOLD	STANDARD TEMPERATURE + GLASS DOOR + 25MM ACCESS PORT + DATA LOGGING + RS232
14L O2	O2 (1-19%)
14L STANDARD	
14L STANDARD	STANDARD TEMPERATURE + GLASS DOOR + 25MM ACCESS PORT - NO DATA LOGGING OR RS232
14L RS232	RS232

Table 13-1: CO₂ Cell Culture Incubators

Please contact us for more information on incubator.

14 PRODUCT FOR ANIMAL HEALTH/ NUTRITION

- Folinic B12 Oil
- Folinic D12 A Oil

CHROMIUM SALTS

- Chromium Picolinate 12%
- Chromium Picolinate 1% (calcium carbonate)
- Chromium Polynicotinate
- Chromium Chloride
- Zinc Picolinate

SELENIUM

- L- Selenomethionine 78%
- L- Selenomethionine 0.5 / 1%
- Sodium Selenite 45%
- Sodium Selenite 4.5% (calcium carbonate)
- Sodium Selenate 41%
- Selenium Dioxide

IODINE SALTS

- Potassium Iodide Stabilised (with calcium stearate) 90/10
- Potassium Iodide 1% Coated 78%
- Calcium Iodate
- Ethylene Diamine Dihydro Iodide (EDDI) 79%
- Povidone Iodine 9-12%
- Iodoform 12%

GROWTH PROMOTER

- Halquinol BP/BPC
- Halquinol 60%
- Halquinol 24%
- Halquinol 12%

IRON PRODUCTS

- Ferrous Fumarate
- Ferrous Sulphate Dried

*CHELATES

- Calcium Amino Acid Chelate
- Copper Amino Acid Chelate
- Iron Amino Acid Chelate
- Magnesium Amino Acid Chelate
- Manganese Amino Acid Chelate
- Zinc Amino Acid Chelate
- Selenium Amino Acid Chelate

OTHER PRODUCTS

- Choline Bitartrate FCC
- Fumaric Acid
- Glycine

- Potassium Chloride
- Sodium Saccharine

QUINOLINE

- Halquinol BP 80
- Halquinol BPC
- Halquinol 60% (with Calcium Carbonate)
- Halquinol 24% (with Calcium Carbonate)
- Halquinol 12.5% (with Calcium Carbonate)
- 5-Chloro, 7-Iodo-8-Hydroxyquinoline (Clioquinol USP)
- 5,7 Di-Iodo 8 Hydroxyquinoline (Di-iodoHydroxyquinoline BP)
- Copper 8-Hydroxyquinoline (Copper Oxime)
- 5-Chloro, 8 Hydroxyquinoline
- 5,7 Di-Chloro, 8 Hydroxyquinoline
- 8-Hydroxyquinoline
- 8-Hydroxyquinoline 5-Sulfonic Acid
- Potassium Hydroxyquinoline Sulphate
- Zinc 8-Hydroxyquinoline

Please contact us for more information.

15 PRODUCT FOR FOOD/ PHARMA

PICOLINATE

- Chromium Picolinate 12% / 1%
- Chromium Chloride
- Chromium Polynicotinate
- Zinc Picolinate
- Picolinic Acid

SELENIUM

- L-Selenomethionine 78% / 1% / 0.5%
- Selenium Dioxide
- Selenium Sulfide USP
- Sodium Selenate
- Sodium Selenite (Pentahydrate)
- Sodium Selenite 45% / 4.5%
- Selenite

SWEETNERS

- Calcium Saccharine Powder
- Saccharine Insoluble Powder
- Sodium Saccharine BP/USP/FCC
- Sodium Saccharine 20-40/40-80
- Sodium Saccharine Spray Dried

AMINO ACID

- Glycine USP / FCC/ Tech
- L-Lysine Mono HCL USP

CHOLINE SALTS

The copyright in this document is the property of Lab Chemicals International Ltd and the contents may not be reproduced or revealed to third parties without prior permission of that company in writing.

Second Floor - Berkeley Square House, Berkeley Square - Mayfair, London, W1J 6BD.

- Choline (+L) Bitartrate USP
- Choline Bitartrate FCC(Conditioned,fine & granular)

IODINE SALTS

- Calcium Iodate (Anhydrous / Monohydrous)
- Potassium Iodate
- Ethylene Diamine Dihydro Iodide (EDDI)
- Potassium Iodide BP/EP/USP/Stabilised / Tech/ Coated
- Povidone Iodide
- Di-Iodo 8 Hydroxyquinoline
- Cliquinol USP

OTHERS

- Cellulose Acetate Phthalate (Coating)
- DL-Tartaric Acid Tech / FCC
- Fumaric Acid Tech / FCC / CWS
- *Folic Acid
- Maleic Acid 100 Mesh / 150 Mesh
- *Methylcobalamin
- Potassium Chloride
- *Sodium Aluminium Sulphate
- Sodium Citrate

SACCHARATE

- Calcium D Saccharate
- Potassium D Saccharate
- Ferrous D Saccharate

Orotate

- Calcium Orotate
- Magnesium Orotate

IRON

- Electrolytic Iron Powder
- Reduced Iron Powder
- Carbonyl Iron Powder
- Ferric Ortho Phosphate
- Ferric Pyro Phosphate
- Ferrous Fumarate
- Dried Ferrous Sulphate
- Iron EDTA
- Iron Sucrose Complex
- *Ferrous Calcium Citrate
- *Ferrous Gluconate
- *Ferrous Ascorbate
- *Iron Polymaltose
- *Ferrous Glycine Sulphate
- *Ferrous Blisglycinate

MICROENCAPSULATED / DIRECT COMPRESSION

- Ferrous Fumarate 60% / 90%

- Dried Ferrous Sulphate 60%

Please contact us for more information.

16 CONCLUSIONS

All Lab chemicals products are procured and supplied to British or international standards where applicable. Our products are available in bulk or in various lengths and widths or even packaged to your own needs.

For more information on any products, please call +44 (0) 207 993 6060 or email and contact our sales team.

DOCUMENT CHANGE DETAILS

ISSUE	CHANGE AUTHORITY	CLASS	RELEVANT INFORMATION/INSTRUCTIONS
01	N/A	-	Initial Issue for 2018

DISTRIBUTION LIST

INTERNAL	EXTERNAL
Lab Chemicals Secretary Lab Chemicals : Employee distribution Customer : Customer configuration control	

THANK
YOU

Let's Connect



info@labchemicalsinternational.com



+44 20 7993 6060



www.labchemicalsinternational.com